



TRADE & INDUSTRIAL POLICY STRATEGIES



Tracking quarterly trends and analysing foreign direct investment, imports and exports

TIPS EXPORT TRACKER

FIRST QUARTER 2025

Compiled by Danae Govender, Liako Mofu
and Kealeboga Baikgaki

TIPS TRACKERS

TIPS Export Tracker provides updates on export trends and identifies sectors and products that are performing well and those that are lagging.

TIPS Import Tracker provides an overview of import patterns and looks at the causes of surges in imports, and their likely impact on industry.

TIPS FDI Tracker monitors inward foreign direct investment projects. It reports on new FDI projects, analyses these, and adds them to an ongoing list of investment projects.

Trade & Industrial Policy Strategies (TIPS)
info@tips.org.za | +27 12 433 9340 | www.tips.org.za

CONTENTS

Overview of export performance	3
Significant growth in exports and analysis.....	7
Significant growth in emery, natural corundum, and other natural abrasives	7
Significant growth in scrap metal	9
Significant slump in exports and analysis.....	11
Significant slump in groats and meal of maize	11
Significant slump in titanium ores and concentrates	13
Annexure.....	15
References	21

Disclaimer

To the fullest extent permitted by law, TIPS and its employees, directors, contractors and consultants shall not be liable or responsible for any error or omission in any of its research, publications, articles and reports (collectively referred to as reports). We make no representation or warranty of any kind, express or implied, regarding the accuracy or completeness of any information in our reports.

Our reports are made available free of charge and are prepared in good faith. Users are requested to acknowledge and correctly reference the source should they decide to use or make reference to any of our reports or any information in our reports.

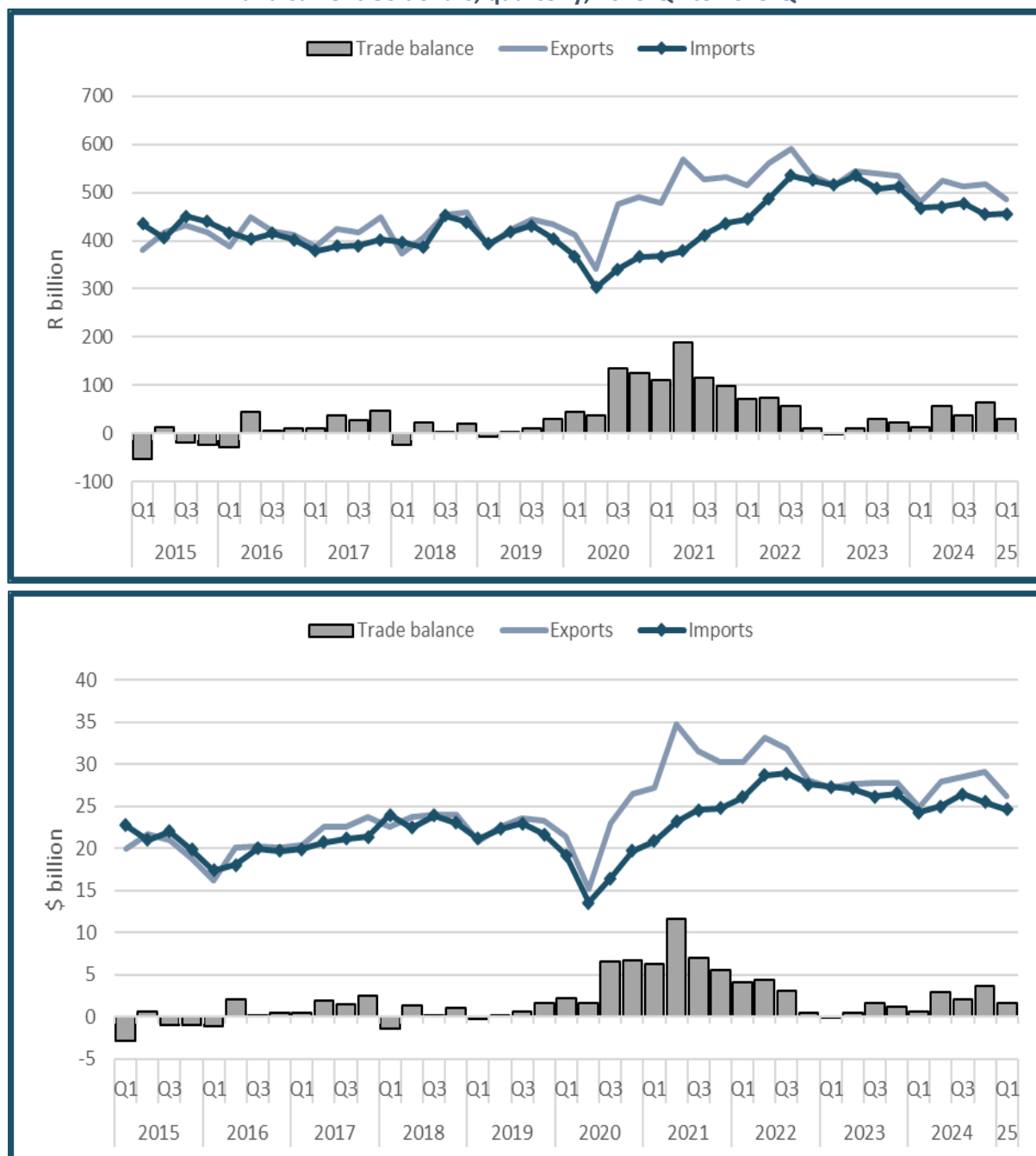
TIPS and its employees, directors, contractors and consultants shall not be liable or responsible for any use, collection, processing or transfer of any of our reports or any information in our reports.

TIPS and its employees, directors, contractors and consultants shall not be liable for any damages, losses or costs suffered arising out of its reports or any information in its reports.

OVERVIEW OF EXPORT PERFORMANCE

Graph 1 shows South Africa’s quarterly exports, imports, and trade balance, in constant (2025) rand and current United States (US) dollars, over the 10-year period spanning the first quarter of 2015 (Q1 2015) to the first quarter of 2025 (Q1 2025). As shown, exports have trended in an overall upwardly direction, and have outperformed imports in several instances. In Q1 2025, exports fell on a quarterly basis, but remain higher than imports in the current quarter, and higher than exports in the same quarter of 2024.

Graph 1: Exports, imports, and trade balance in constant 2025 (a) rand and current US dollars, quarterly, 2015-Q1 to 2025-Q1



Note: (a) Rand values are reflatd using implicit GDP deflator, rebased to the first quarter of 2025. *Source:* Trade data calculated from ITC. Trade Map. Interactive database. Downloaded from www.trademap.org in June 2025. GDP deflator calculated from Statistics South Africa. GDP P0441 – GDP Time series Q1 2025. Excel spreadsheet. Downloaded from www.statssa.gov in June 2025.

In Q1 2025, South Africa's total exports amounted to R486 billion, down R33 billion (in constant 2025 rand), from Q4 2024 (Calculated from ITC, n.d.). The quarterly contraction in exports was driven by decreases to key destinations, including Area Not Elsewhere Specified (Area NES), Germany, and the US, among others.¹ Total imports, in contrast, valued at R456 billion in Q1 2025, are up R2 billion quarter-on-quarter (q-o-q). Despite the convergence in exports and imports, exports remain higher. South Africa has thus maintained a positive trade balance for the eighth consecutive quarter, registering R30 billion in Q1 2025. South Africa's exports are also R5 billion higher in the current quarter than in the same quarter of the previous year.

Table 1 lists South Africa's top export product groupings, by value, in Q1 2025 and Q1 2024; assesses their share in total exports in each period; and analyses their year-on-year (y-o-y) growth from Q1 2024 to Q1 2025. In Q1 2025, exports of the top 20 product groupings were valued at R414 billion, equivalent to 85% of South Africa's total exports. The top five product groupings – precious stones and metals; ores, slag and ash; vehicles; mineral fuels and oils; and industrial machinery – accounted for R295 billion (or 61%). In terms of growth, the export of five product groups contracted y-o-y, while the export of 15 product groups grew.

Precious stones and metals were South Africa's top export product grouping in Q1 2025, with exports valued at R88.3 billion. In addition to being the top export, precious stones and metals also had the largest y-o-y absolute increase, with exports R11.6 billion higher in Q1 2025 relative to Q1 2024. It is noted that a significant proportion of growth for this product grouping is driven by increased gold exports to Area NES.

Vehicles, South Africa's third-largest export product group in Q1 2025, registered the second-largest absolute y-o-y growth among South Africa's top 20 export product groups, increasing by R8.2 billion from Q1 2024 to Q1 2025. While much of this growth was driven by increased exports to Belgium and Germany, exports to smaller markets, such as the United Arab Emirates (UAE) and France, also contributed to the increase. In terms of products, motor vehicles for the transportation of less than 10 people had the largest absolute growth.

With regard to contractions, South Africa's seventh-largest export product group, iron and steel, fell almost 30% y-o-y from R30 billion in Q1 2024 to R21 billion in Q1 2025. A significant proportion of this reduction is due to a decrease in South Africa's ferro-chromium exports to China, Belgium, and the US.

Ores, slag and ash had the second-largest absolute y-o-y reduction in South Africa's top 20 product groups in Q1 2025, with exports down almost R9 billion on a yearly basis. By country, the largest absolute reductions were registered in the Netherlands and China, while, for products, iron ores and concentrates, chromium ores and concentrates, and titanium ores and concentrates lost the most y-o-y, in absolute terms.

In addition to the largest absolute reduction in rand terms, the decrease in iron and steel exports also represents the largest percentage decrease, 29% among South Africa's top 20 product groupings. In terms of percentage growth, on the other hand, copper and articles thereof had the largest increase, on a yearly basis, growing more than 25% from Q1 2024 to Q1 2025.

¹ Area NES refers to a partner whose information is confidential or cannot be verified.

Table 1: Top 20 product groups, 2025-Q1 and 2024-Q1

RANK	HS CODE	SECTOR	VALUE (R BILLION)		SHARE (%)		ANNUAL GROWTH RATE (%)	TOP EXPORT MARKET
			2024-Q1	2025-Q1	2024-Q1	2025-Q1	2024-Q1 TO 2025-Q1	2025-Q1
1	'71	Precious stones and metals	76.7	88.3	16%	18%	15%	Area NES
2	'26	Ores, slag and ash	81.9	73.2	17%	15%	-11%	China
3	'87	Vehicles	51.6	59.7	11%	12%	16%	Germany
4	'27	Mineral fuels and oils	47.8	49.9	10%	10%	4%	India
5	'84	Machinery (industrial)	23.8	24.4	5%	5%	2%	Zambia
6	'08	Edible fruit and nuts	21.8	23.0	5%	5%	5%	Netherlands
7	'72	Iron and steel	30.1	21.2	6%	4%	-29%	China
8	'76	Aluminium and articles thereof	9.1	10.3	2%	2%	13%	US
9	'85	Electrical machinery	8.9	9.1	2%	2%	3%	Namibia
10	'22	Beverages, spirits and vinegar	6.3	6.3	1%	1%	1%	Botswana
11	'39	Plastics and articles thereof	5.9	6.1	1%	1%	4%	Zambia
12	'29	Organic chemicals	5.1	6.0	1%	1%	17%	Belgium
13	'10	Cereals	4.9	5.6	1%	1%	15%	Zimbabwe
14	'73	Articles of iron or steel	4.9	5.2	1%	1%	6%	Zambia
15	'74	Copper and articles thereof	4.1	5.2	1%	1%	25%	China
16	'28	Inorganic chemicals	5.2	4.8	1%	1%	-7%	Belgium
17	'25	Salt; sulphur; earths and stone	3.9	4.5	1%	1%	15%	Netherlands
18	'47	Pulp of wood	5.2	4.3	1%	1%	-18%	India
19	'38	Miscellaneous chemical products	4.4	3.9	1%	1%	-11%	Zambia
20	'33	Essential oils and resinoids	3.1	3.5	1%	1%	15%	Namibia

Note: Export values are in current rands, rounded off. Shares and growth rates are also rounded. Shares and growth rates have been calculated on the unrounded values. *Source:* Calculated from ITC. Trade Map. Interactive database. Downloaded from www.trademap.org in May 2025.

Graph 2 examines changes in the market share for South Africa's top 20 export destinations (countries), by comparing their share in the value of total exports in Q1 2025 with their share in Q1 2024. In Q1 2025, the top 20 countries, by value, accounted for R403 billion (or 83%) of South Africa's total exports. With the exception of Area NES, the export market share for most destinations remained relatively stable between Q1 2024 and Q1 2025.

In Q1 2025, China was South Africa's largest export destination, receiving 11% of South Africa's total exports – equivalent to R51 billion. In addition to a R4 billion y-o-y absolute reduction in South Africa's exports to China, China's share of South Africa's exports has dropped by a percentage point in the current quarter. South Africa's exports to China continue to be dominated by products from the commodities value chain, as the top five export product groups – ores, slag and ash; iron and steel; copper; nickel; and wool – accounted for almost R48 billion.

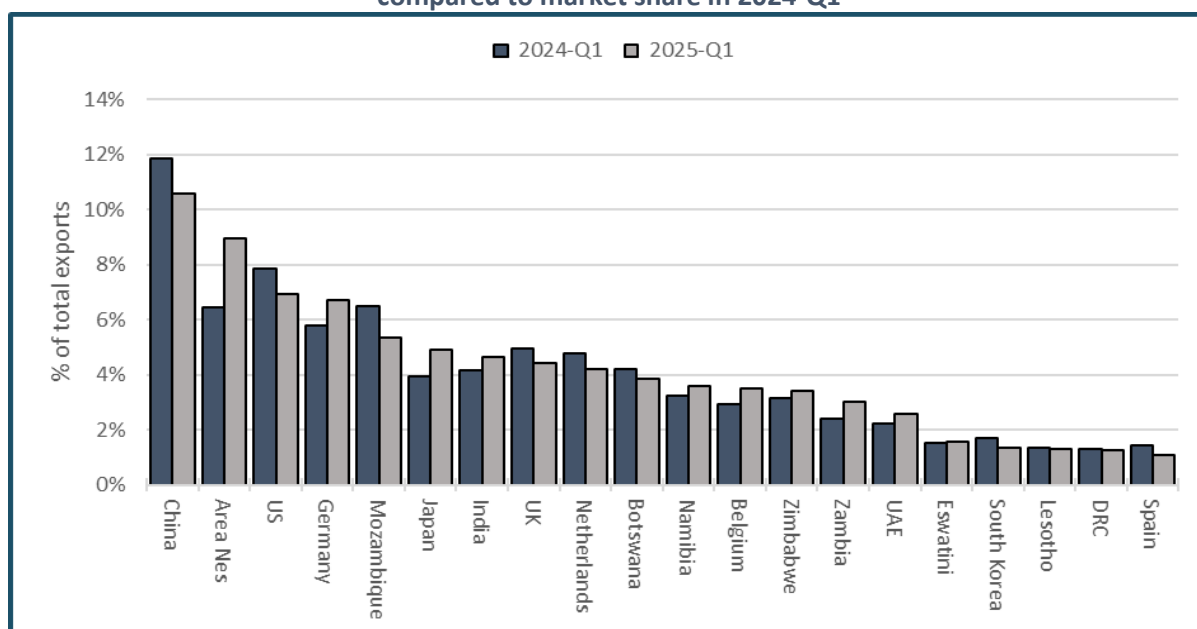
Area NES, although not representing a specific market or region, continues to feature as a key destination for South Africa's exports. In Q1 2025, Area NES was South Africa's second-largest export destination, receiving R43 billion of South Africa's total exports, up from R30 billion in the same

quarter of the previous year. It is noted that much of South Africa’s exports to this unspecified area consists of gold – around R41 billion in Q1 2025, up from R28 billion in Q1 2024.

The US was South Africa’s third-largest export partner in Q1 2025, despite losing approximately one percentage point, y-o-y, in the share of South Africa’s total exports. South Africa’s exports to the US remain relatively diversified, with the top five product groups – precious stones and metals, vehicles, aluminium, ores, slag and ash, and iron and steel – accounting for R23 billion of the R34 billion country total.

South Africa’s exports to Germany, the country’s fourth-largest export destination in Q1 2025, are up R5 billion, y-o-y, from R27 billion to R33 billion. As in the case of the country’s exports to the US, South Africa’s exports to Germany are relatively diversified, as the top five export product groups, which account for R29 billion, comprise vehicles; precious stones and metals; ores, slag and ash; industrial machinery; and fruit and nuts. Vehicles, alone, however, account for more than half of exports.

Graph 2: Market share for South Africa’s top export markets in 2025-Q1 compared to market share in 2024-Q1



Source: Calculated from ITC. Trade Map. Interactive database. Downloaded from www.trademap.org in May 2025.

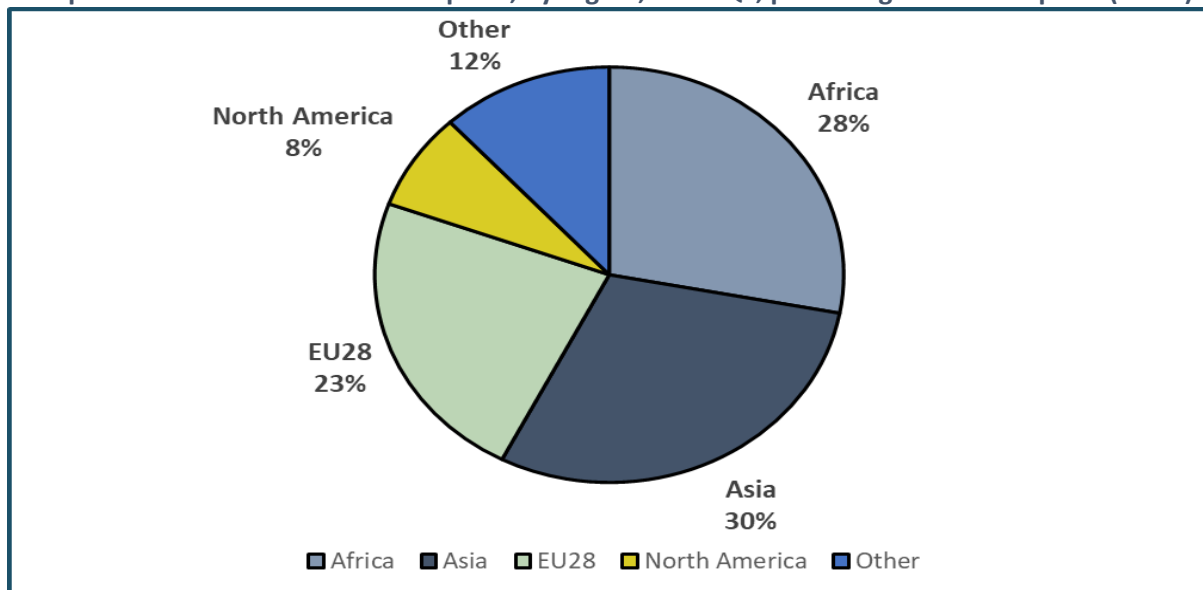
The regional share of South Africa’s exports are shown in Graph 3. Asia remains South Africa’s largest regional export destination, receiving R144 billion (30%) of South Africa’s exports in Q1 2025. The top three destinations in Asia are China, Japan, and India which account for more than two thirds of South Africa’s exports to the region. In terms of products, the top five exports from South Africa to Asian countries this quarter were ores, slag and ash, precious stones and metals, mineral fuels and oil, iron and steel, and fruit and nuts. These accounted for R109 billion of South Africa’s exports, or 76% of the regional total.

Africa remains South Africa’s second-largest regional export destination, with exports to the continent valued at R136 billion in Q1 2025. The top eight destinations, all Southern African Development Community (SADC) countries, account for more than 80% of South Africa’s exports to the continent. In terms of products, South Africa’s exports to Africa remain diversified as the top five product groups, constituting almost R60 billion in export value, are mineral fuels and oil; industrial machinery; vehicles; ores, slag and ash; and iron and steel.

The European Union 28 (EU28) was South Africa’s third-largest regional export destination in Q1 2025, receiving R112 billion of South Africa’s total exports.² The top five EU28 destinations, Germany, the UK, Netherlands, Belgium, and Spain, received R97 billion of South Africa’s exports, and 87% of the regional total. Regarding products, vehicles, fruit and nuts, ores, slag and ash, precious stones and metals, and industrial machinery are South Africa’s top five exports to this region, accounting for R81 billion.

The share of South Africa’s exports to North America (which, for the purpose of analysis in the Export Tracker, refer only to the US, Canada, and Mexico) is predominantly accounted for by the US, to which South Africa exported R34 billion in Q1 2025.

Graph 3: Share of South Africa's exports, by region, 2025-Q1, percentage of total exports (value)



Note: Shares may not sum to 100% due to rounding. *Source:* Calculated from ITC. Trade Map. Interactive database. Downloaded from www.trademap.org in May 2025.

SIGNIFICANT GROWTH IN EXPORTS AND ANALYSIS

Significant growth in emery, natural corundum, and other natural abrasives

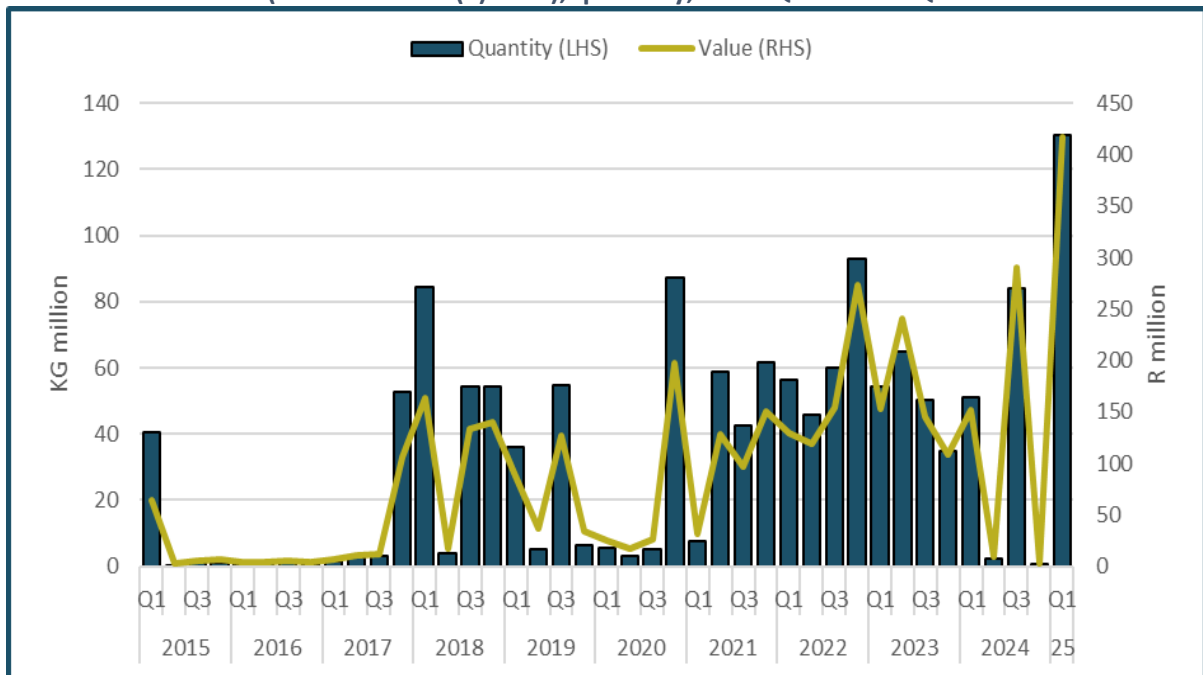
HS25132000 Emery; natural corundum, natural garnet and other natural abrasives, whether or not heat-treated

This product refers to natural rock that is used to produce abrasive powder, for which industrial applications include cutting, surface preparation, polishing, and creating non-slip surfaces. It was analysed as a product of significant slump in the fourth quarter of 2021 (Mokoena and Pheto, 2021).

As shown in Graph 4, South Africa’s exports of emery and other natural abrasives have been relatively elevated in recent years, with the exception of two non-consecutive quarters with low exports. This contrasts with the earlier portion of the 10-year timeframe, in which slumps extended across several consecutive quarters. In Q1 2025, South Africa was the world’s largest exporter of emery and other natural abrasives, ahead of Australia and China. In this quarter, South Africa’s exports grew 155% y-o-y, from 51 million kg valued at R152 million in Q1 2024 to 131 million kg valued at R417 million. On a quarterly basis, growth is even more notable, as exports jumped from less than a million kg valued at R3 million in Q4 2024.

² EU28 refers to the 28 EU member states prior to Brexit. EU28 is used, despite Brexit, to capture South Africa’s exports to the UK.

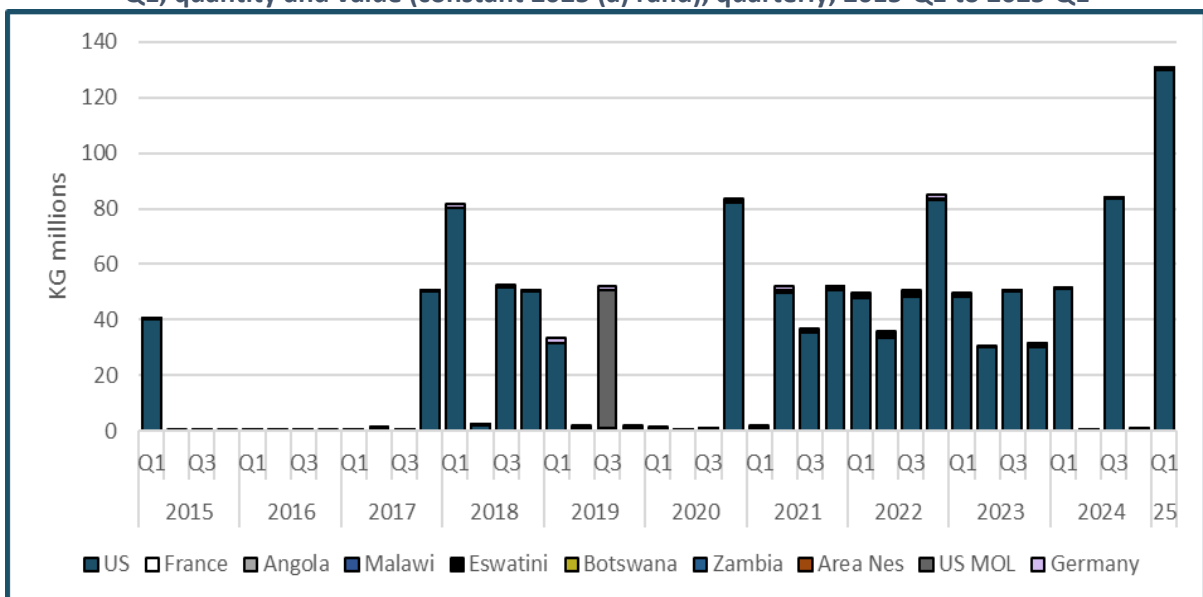
Graph 4: South Africa's exports of emery and other natural abrasives, quantity and value (constant 2025 (a) rand), quarterly, 2015-Q1 to 2025-Q1

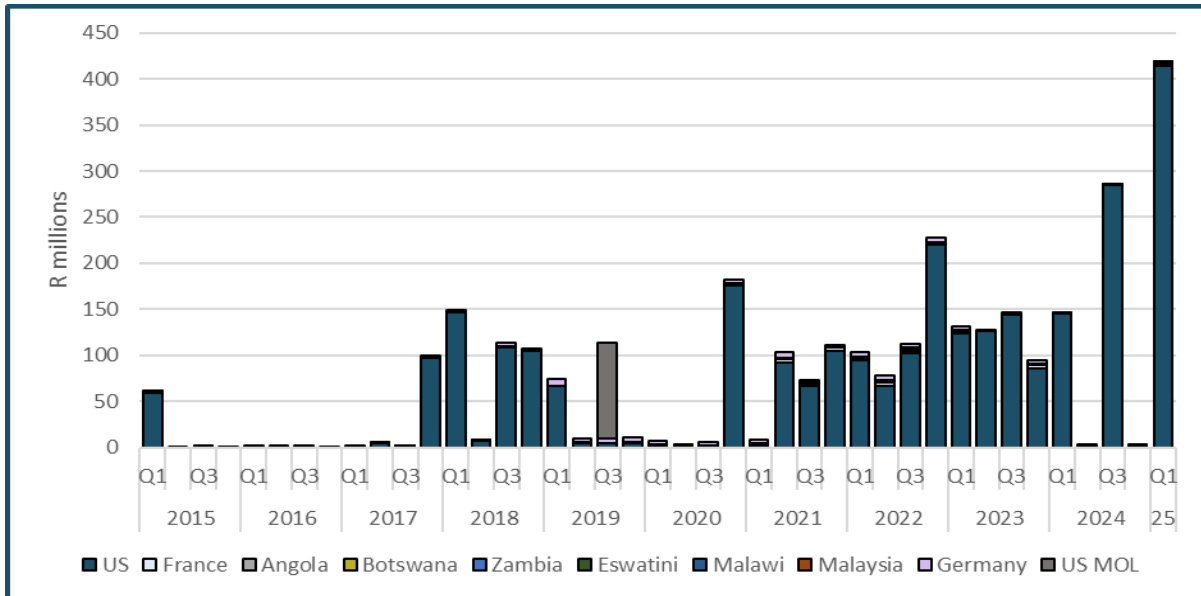


Note: (a) Rand values are reflat using implicit GDP deflator, rebased to the first quarter of 2025. Source: Trade data calculated from ITC. Trade Map. Interactive database. Downloaded from www.trademap.org in June 2025. GDP deflator calculated from Statistics South Africa. GDP P0441 – GDP Time series Q1 2025. Excel spreadsheet. Downloaded from www.statssa.gov in June 2025.

As shown in Graph 5, the US is the main export destination for South Africa’s emery exports, and much of the variation can be explained by the US market. One of the exceptions to this is US Minor Outlying Islands’ (US MOL) dominance as export destination in Q3 2019, when it received 50 million kg valued at R104 million (in constant 2025 rand) in exports of this product from South Africa. Germany has also been a notable destination for South Africa’s exports of this product, receiving between 14% and 17% of total exports, by quantity, over the Q4 2019 to Q3 2020 period.

Graph 5: Top 10 markets for South Africa's exports of emery and other natural abrasives in 2025-Q1, quantity and value (constant 2025 (a) rand), quarterly, 2015-Q1 to 2025-Q1





Note: (a) Rand values are reflat using implicit GDP deflator, rebased to the first quarter of 2025. Source: Trade data calculated from ITC. Trade Map. Interactive database. Downloaded from www.trademap.org in June 2025. GDP deflator calculated from Statistics South Africa. GDP P0441 – GDP Time series Q1 2025. Excel spreadsheet. Downloaded from www.statssa.gov in June 2025.

Significant growth in scrap metal

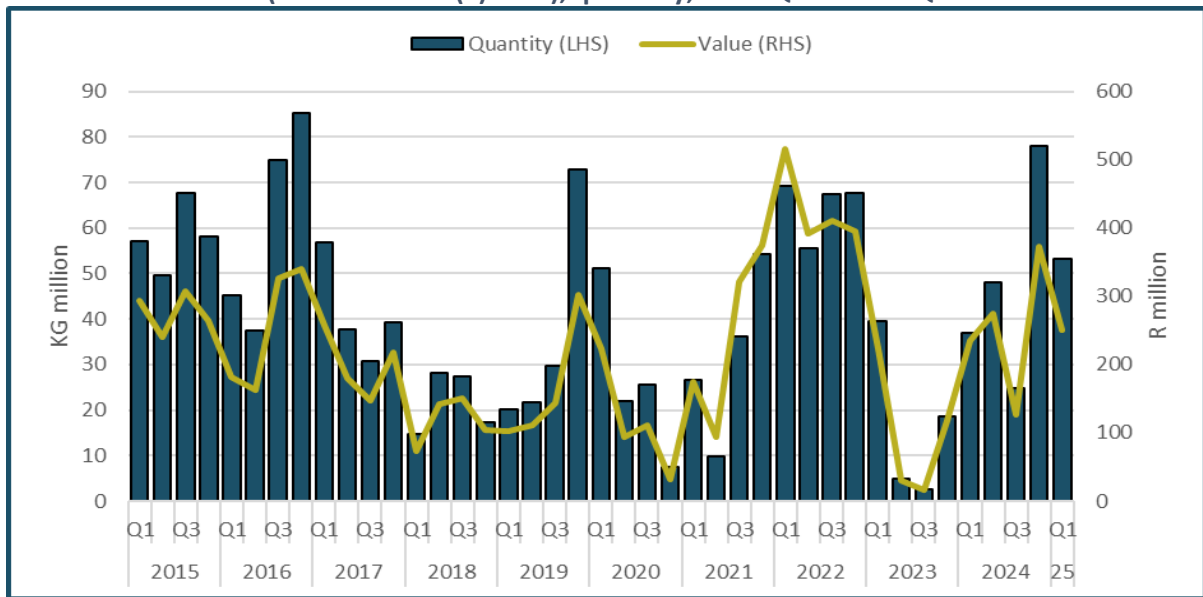
HS72044900 Waste and scrap of iron or steel

This product effectively refers to scrap metal composed of iron or steel, which can be recycled and used to manufacture metal products. Within the context of a low-carbon economy, it is an essential input in the manufacture of low-carbon iron and steel products. This product was analysed as a product of significant growth in Q4 2019. Although waste and scrap of iron or steel did not fall within South Africa's top 50 exports, by quantity, in Q1 2025 (it ranked 51st this quarter), it has been selected for analysis for two key reasons. First, government has implemented measures that seek to curtail the export of scrap metal, including the Price Preference System and a temporary export ban (Department of Trade, Industry and Competition, 2020; 2023). Second, it is considered a crucial input for transforming South Africa's iron and steel industry into a low-carbon one.

As shown in Graph 6, South Africa's exports of iron and steel scrap, similar to metal ores, follows a seasonal trend and exhibits price fluctuations. Also shown in Graph 6 is the effect of government's ban on the export of scrap metal from end-2022 to end-2023 (extended), as exports fell to a 10-year low in Q3 2023. Since the lifting of the ban, however, exports have returned to pre-ban levels.

In Q1 2025, South Africa was the 22nd largest exporter of waste and scrap of iron or steel – the US, United Kingdom (UK), and Japan led the quarter as the world's top three. In this quarter, South Africa's exports of waste and scrap of iron or steel grew 44% y-o-y, to 53 million kg valued at R251 million from 37 million kg valued at R236 million. This growth was driven by increased exports to India and Kenya, but was countered by a decrease in exports to Pakistan.

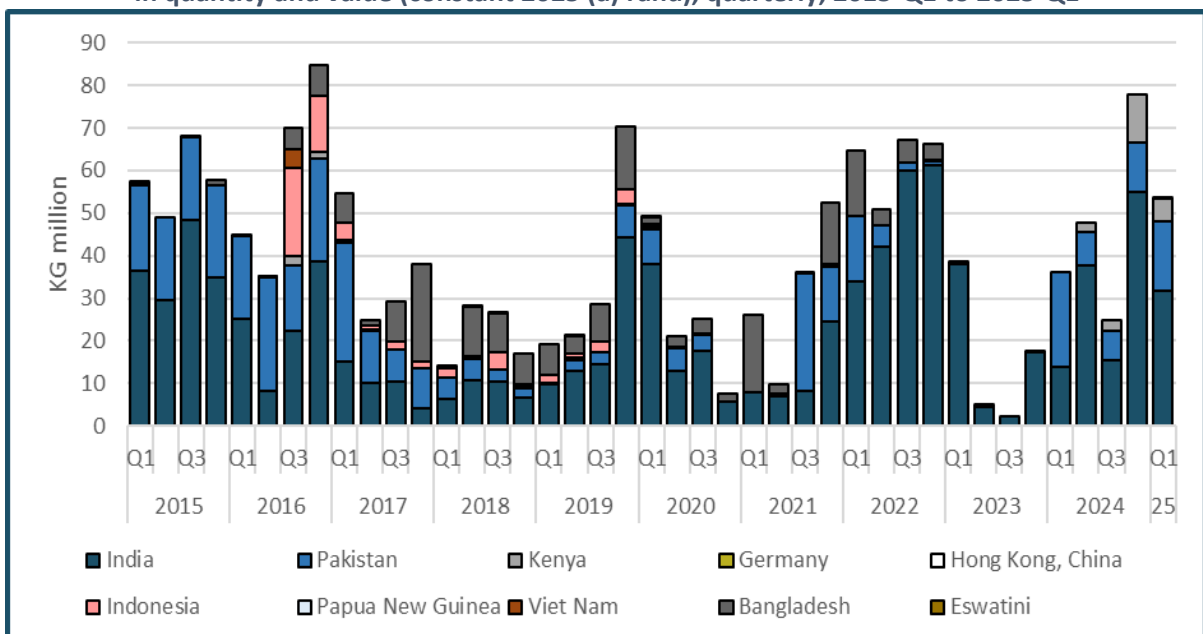
Graph 6: South Africa's export of waste and scrap of iron or steel, quantity and value (constant 2025 (a) rand), quarterly, 2015-Q1 to 2025-Q1

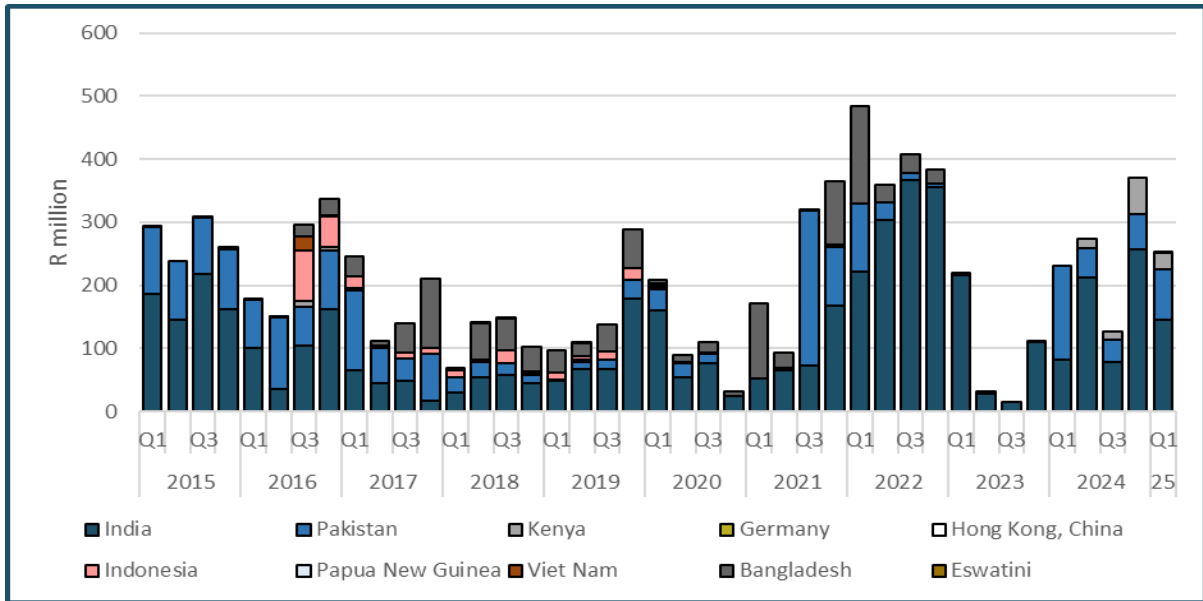


Note: (a) Rand values are reflat using implicit GDP deflator, rebased to the first quarter of 2025. Source: Trade data calculated from ITC. Trade Map. Interactive database. Downloaded from www.trademap.org in June 2025. GDP deflator calculated from Statistics South Africa. GDP P0441 – GDP Time series Q1 2025. Excel spreadsheet. Downloaded from www.statssa.gov in June 2025.

For much of the 10-year timeframe under consideration, Pakistan and India have been top recipients of South Africa’s exports of this product, receiving more than 80% from Q2 2022, including during the export ban (Graph 7). In Q1 2025, the largest recipient of South Africa’s exports of iron and steel waste and scrap was India, which received 32 million kg valued at R146 million. Also shown in Graph 7 is the previous importance of Bangladesh, to which South Africa exported more than 30% of this product in several instances toward the late 2010s. South Africa has not, however, registered exports of this product to Bangladesh since Q1 2023, i.e., since the quarter following the implementation of the ban on the export of scrap metal.

Graph 7: Top 10 markets for South Africa's waste and scrap of iron or steel exports in 2025-Q1, in quantity and value (constant 2025 (a) rand), quarterly, 2015-Q1 to 2025-Q1





Note: (a) Rand values are reflated using implicit GDP deflator, rebased to the first quarter of 2025. Source: Trade data calculated from ITC. Trade Map. Interactive database. Downloaded from www.trademap.org in June 2025. GDP deflator calculated from Statistics South Africa. GDP P0441 – GDP Time series Q1 2025. Excel spreadsheet. Downloaded from www.statssa.gov in June 2025.

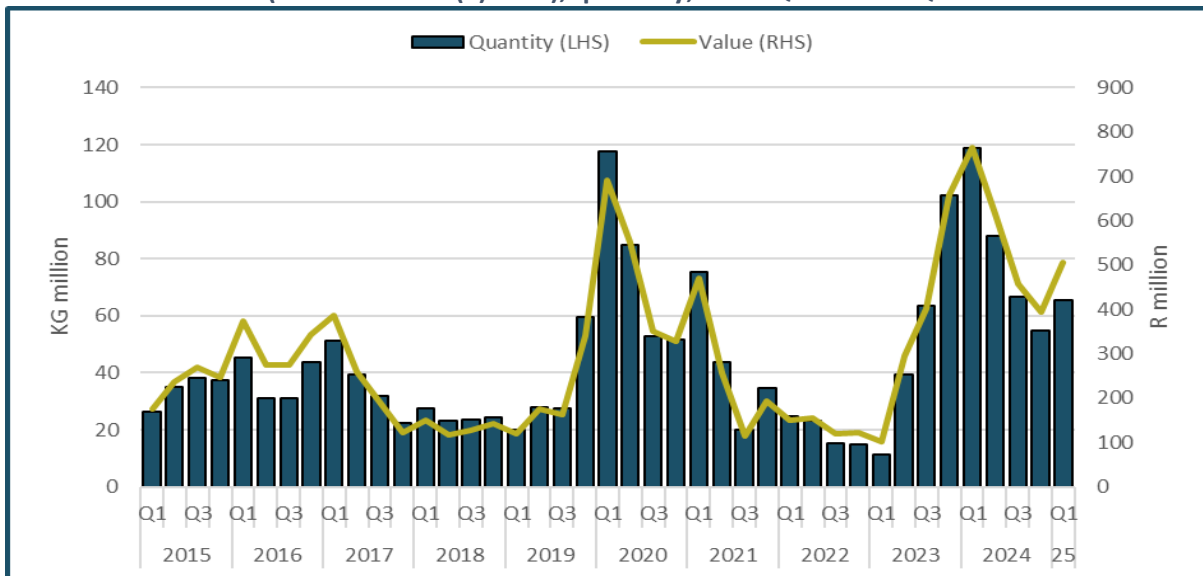
SIGNIFICANT SLUMP IN EXPORTS AND ANALYSIS

Significant slump in goats and meal of maize

HS11031390 Goats and meal of maize "corn": Other

Otherwise known as maize meal, this product refers to maize that has been processed for use as food. This product was analysed as one of significant growth in the first quarter of 2024, where exports registered a decade-wide peak. Since then, South Africa's exports of this product have fallen gradually, and, despite the small quarterly uptick, exports are significantly lower than in Q1 2024.

Graph 8: South Africa's goats and meal of maize exports, quantity and value (constant 2025 (a) rand), quarterly, 2015-Q1 to 2025-Q1

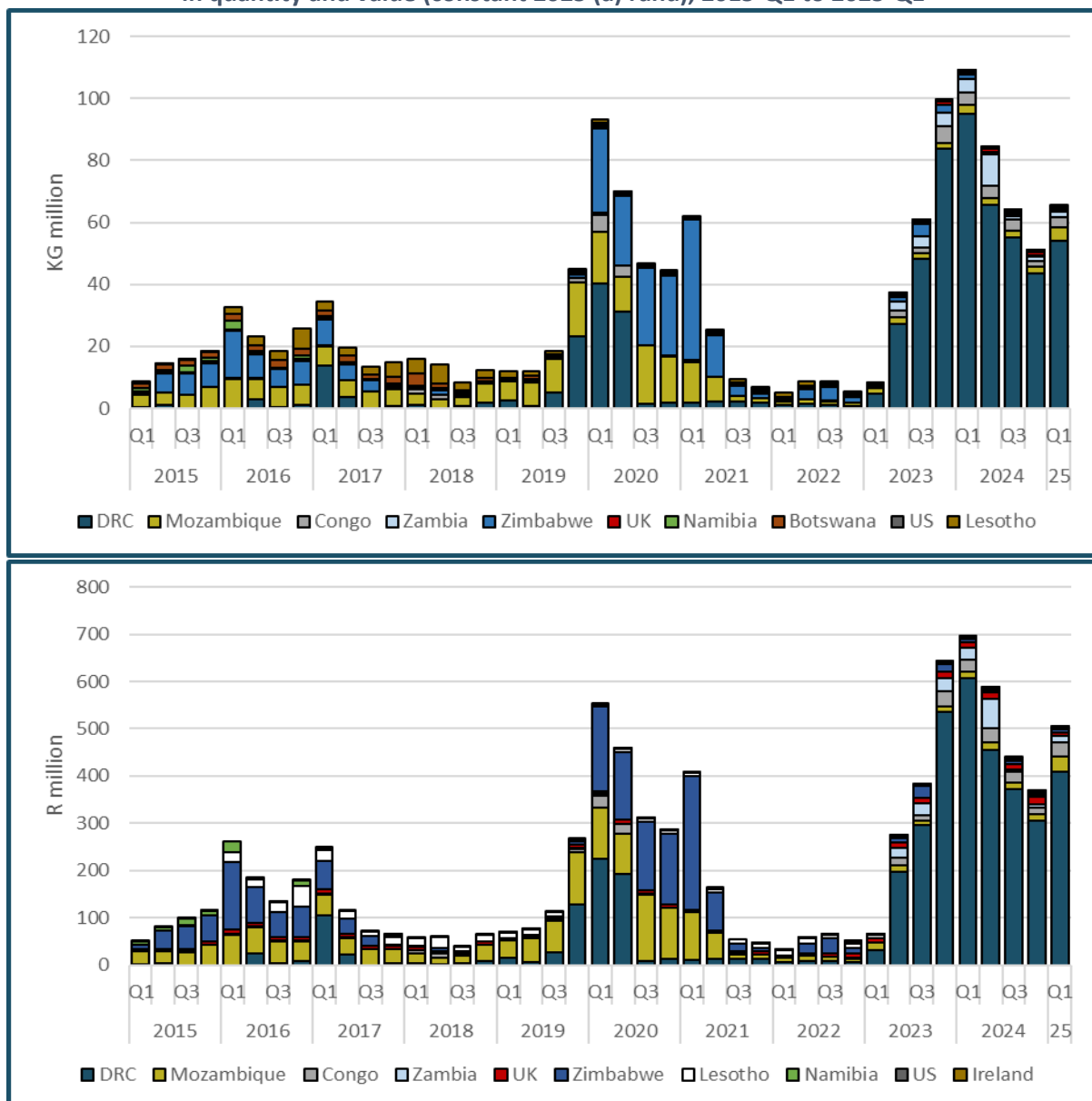


Note: (a) Rand values are reflated using implicit GDP deflator, rebased to the first quarter of 2025. Source: Trade data calculated from ITC. Trade Map. Interactive database. Downloaded from www.trademap.org in June 2025. GDP deflator calculated from Statistics South Africa. GDP P0441 – GDP Time series Q1 2025. Excel spreadsheet. Downloaded from www.statssa.gov in June 2025.

In Q1 2025, South Africa's exports of groats and maize meal amounted to 65 million kg valued at R507 million, falling 45% y-o-y, from 119 million kg valued at R766 million. On a more positive note, however, exports of this product are up 20% q-o-q, from 55 million kg valued at R394 million in Q4 2024. While the y-o-y decline can be attributed to reduced exports to a selection of countries, the decrease in exports to the Democratic Republic of Congo (DRC) is, largely, responsible for the slump.

Despite the 41 million kg y-o-y decline in exports to the DRC, it was the largest recipient of South Africa's exports of this product, receiving 54 million kg valued at R408 million in Q1 2025 (Graph 9). Over much of the last decade, other SADC countries have also featured as key destinations for South Africa's exports of this important staple food product. At the same time, it is noted that exports to Mozambique and Zimbabwe, which were notable recipients in the early 2020s, have declined in recent quarters.

Graph 9: Top 10 markets for South Africa's groats and meal of maize exports in 2025-Q1, quarterly, in quantity and value (constant 2025 (a) rand), 2015-Q1 to 2025-Q1



Note: (a) Rand values are reflated using implicit GDP deflator, rebased to the first quarter of 2025. *Source:* Trade data calculated from ITC. Trade Map. Interactive database. Downloaded from www.trademap.org in June 2025. GDP deflator calculated from Statistics South Africa. GDP P0441 – GDP Time series Q1 2025. Excel spreadsheet. Downloaded from www.statssa.gov in June 2025.

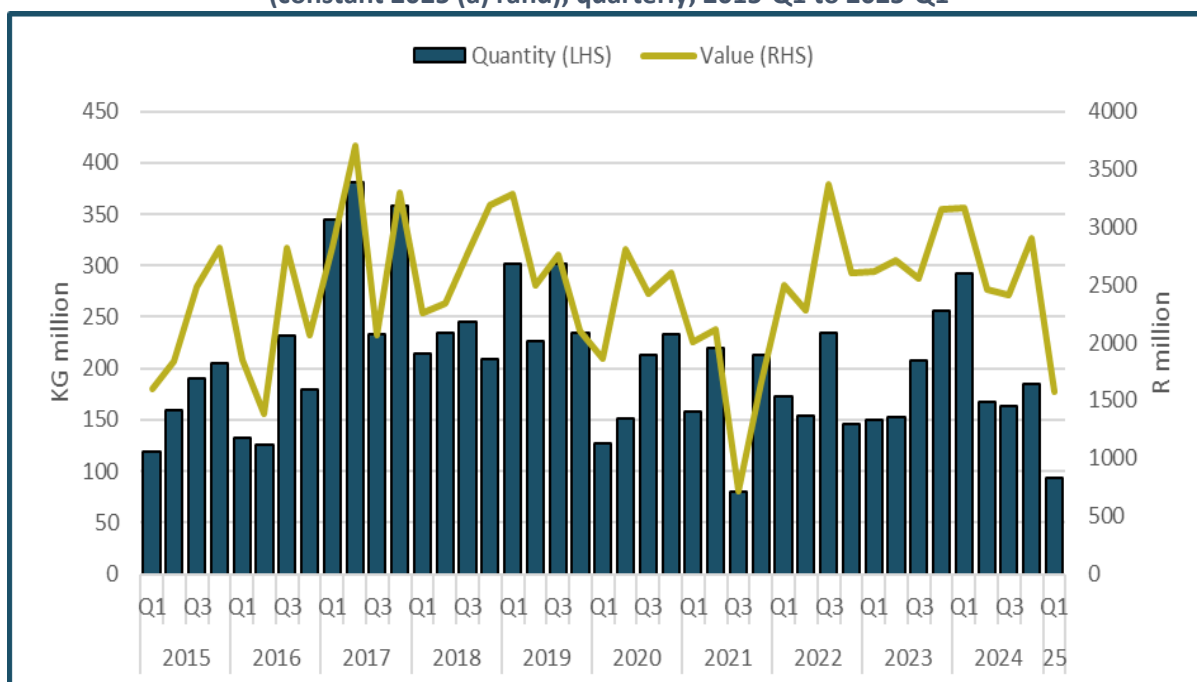
Significant slump in titanium ores and concentrates

HS26140000 Titanium ores and concentrates

Titanium ores and concentrates are primarily used for specialised, high-value applications. Its resistance to corrosion from alkalis, acids, industrial chemicals, and marine environments, make it the preferred material for manufacturing aircraft, missiles, and deep-sea vessels (Nyakabawo and Mokoena, 2021). This product was analysed as one of significant slump in Q1 2020 and Q3 2021, and, in Q4 2023, it was analysed as a product of significant growth. As shown in Graph 10, South Africa's exports of titanium ores and concentrates are seasonal, as metals exports are tied to international demand and supply cycles. Further evidence of international influence on South Africa's exports of this product is the decoupling of quantity and value, with export value growing faster than quantity during the commodity price boom that occurred in 2022.

In Q1 2025, South Africa was the third-largest exporter of titanium ores and concentrates, globally, behind Australia and Madagascar. In this quarter, South Africa exported 93 million kg valued at R1.6 billion, representing a 68% y-o-y decline from 292 million kg valued at R3.2 billion in Q1 2024. In addition to the yearly decrease, exports of this product are also down 49% q-o-q, from 184 million kg valued at R2.9 billion in Q4 2024. It is noted that the y-o-y decrease is, largely, the result of reduced exports to China, which are down 119 million kg. In addition to losing ground in China, South Africa's other top export destinations for this product also received fewer exports in Q1 2025 than in the same quarter of the previous year (Graph 11).

Graph 10: South Africa's exports of titanium ores and concentrates, quantity and value (constant 2025 (a) rand), quarterly, 2015-Q1 to 2025-Q1

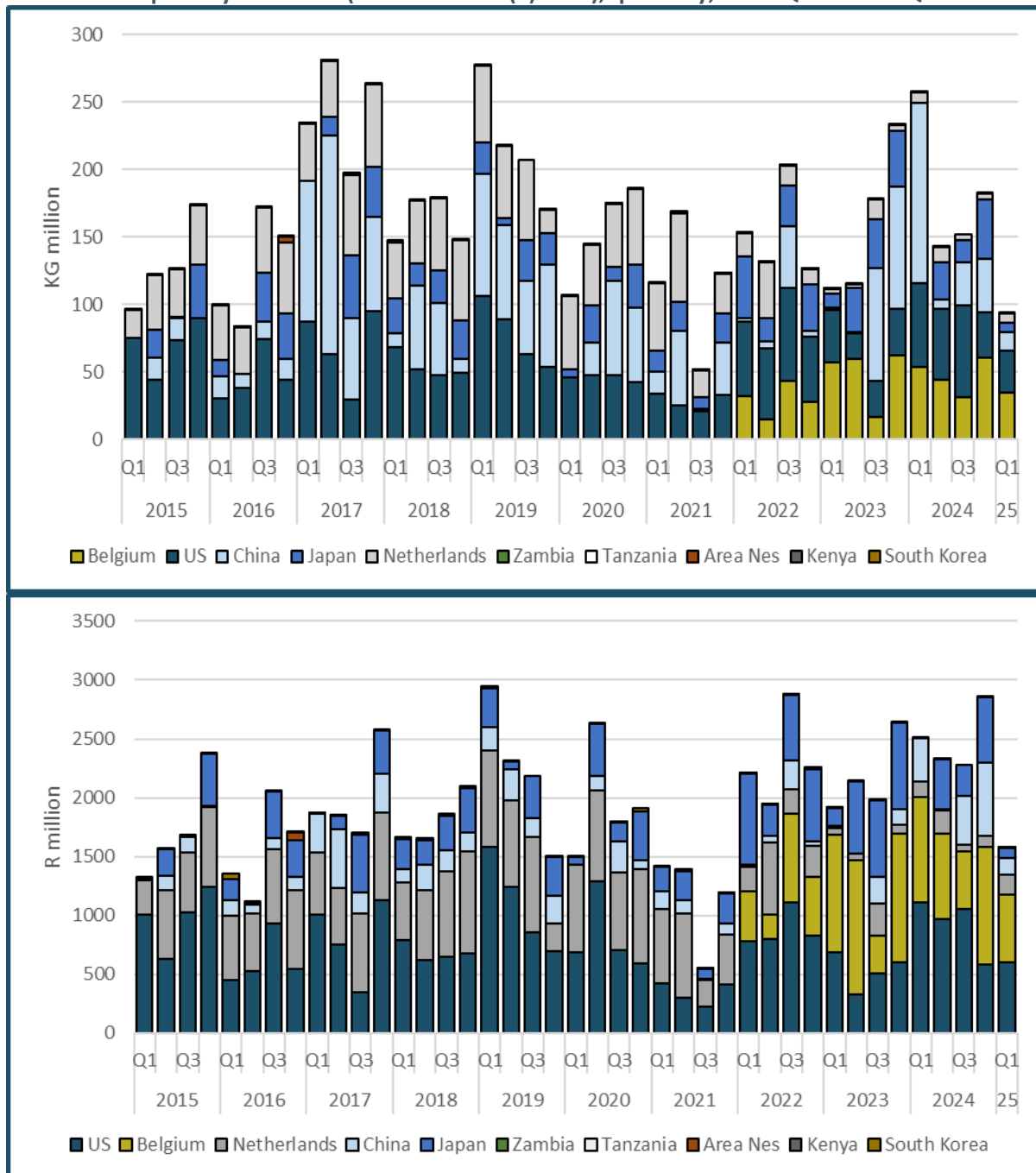


Note: (a) Rand values are reflatd using implicit GDP deflator, rebased to the first quarter of 2025. Source: Trade data calculated from ITC. Trade Map. Interactive database. Downloaded from www.trademap.org in June 2025. GDP deflator calculated from Statistics South Africa. GDP P0441 – GDP Time series Q1 2025. Excel spreadsheet. Downloaded from www.statssa.gov in June 2025.

In Q1 2025, Belgium and the US were key export destinations for South Africa's titanium ores and concentrates, with exports amounting to 35 million kg valued at R570 million and 31 million kg valued at R604 million, respectively. While it currently features as the top destination, by quantity, South

Africa's exports of this product to Belgium, as per the 10-year timeframe under consideration, did not fully commence until Q1 2022, apart from a small amount of exports in Q4 2019. That said, for much of the timeframe under consideration, the Netherlands and China featured more consistently, alongside the US, as major export destinations.

Graph 11: Top 10 markets for South Africa's titanium ores and concentrates exports in 2025-Q1, in quantity and value (constant 2025 (a) rand), quarterly, 2015-Q1 to 2025-Q1



Note: (a) Rand values are reflatd using implicit GDP deflator, rebased to the first quarter of 2025. Source: Trade data calculated from ITC. Trade Map. Interactive database. Downloaded from www.trademap.org in June 2025. GDP deflator calculated from Statistics South Africa. GDP P0441 – GDP Time series Q1 2025. Excel spreadsheet. Downloaded from www.statssa.gov in June 2025.

ANNEXURE

Table A1: South Africa's Top 50 exports, by value, 2025-Q1

RANK	HS CODE	PRODUCT LABEL	VALUE (R BILLIONS)		GROWTH RATE (%)
			2024-Q1	2025-Q1	2024-Q1 TO 2025-Q1
1	'71	Natural or cultured pearls, precious or semi-precious stones, precious metals	76.7	88.3	15%
2	'26	Ores, slag and ash	81.9	73.2	-11%
3	'87	Vehicles other than railway or tramway rolling stock, and parts and accessories thereof	51.6	59.7	16%
4	'27	Mineral fuels, mineral oils and products of their distillation; bituminous substances	47.8	49.9	4%
5	'84	Nuclear reactors, boilers, machinery and mechanical appliances; parts thereof	23.8	24.4	2%
6	'08	Edible fruit and nuts; peel of citrus fruit or melons	21.8	23.0	5%
7	'72	Iron and steel	30.1	21.2	-29%
8	'76	Aluminium and articles thereof	9.1	10.3	13%
9	'85	Electrical machinery and equipment and parts thereof; sound recorders and reproducers	8.9	9.1	3%
10	'22	Beverages, spirits and vinegar	6.3	6.3	1%
11	'39	Plastics and articles thereof	5.9	6.1	4%
12	'29	Organic chemicals	5.1	6.0	17%
13	'10	Cereals	4.9	5.6	15%
14	'73	Articles of iron or steel	4.9	5.2	6%
15	'74	Copper and articles thereof	4.1	5.2	25%
16	'28	Inorganic chemicals; organic or inorganic compounds of precious metals, of rare-earth metals	5.2	4.8	-7%
17	'25	Salt; sulphur; earths and stone; plastering materials, lime and cement	3.9	4.5	15%
18	'47	Pulp of wood or of other fibrous cellulosic material; recovered (waste and scrap) paper	5.2	4.3	-18%
19	'38	Miscellaneous chemical products	4.4	3.9	-11%
20	'33	Essential oils and resinoids; perfumery, cosmetic or toilet preparations	3.1	3.5	15%
21	'20	Preparations of vegetables, fruit, nuts or other parts of plants	3.0	3.5	15%
22	'44	Wood and articles of wood; wood charcoal	2.4	3.0	26%
23	'48	Paper and paperboard; articles of paper pulp, of paper or of paperboard	3.0	3.0	3%
24	'21	Miscellaneous edible preparations	2.7	3.0	11%
25	'90	Optical, photographic, cinematographic, measuring, checking, precision, medical or surgical	2.3	2.8	19%
26	'75	Nickel and articles thereof	2.6	2.6	1%
27	'34	Soap, organic surface-active agents, washing preparations, lubricating preparations, artificial	2.6	2.5	-4%
28	'30	Pharmaceutical products	2.0	2.5	25%
29	'03	Fish and crustaceans, molluscs and other aquatic invertebrates	2.1	2.4	14%
30	'40	Rubber and articles thereof	2.1	2.1	2%
31	'02	Meat and edible meat offal	1.7	2.1	23%
32	'15	Animal, vegetable or microbial fats and oils and their cleavage products; prepared edible fats	1.7	2.0	14%
33	'23	Residues and waste from the food industries; prepared animal fodder	1.4	2.0	38%

RANK	HS CODE	PRODUCT LABEL	VALUE (R BILLIONS)		GROWTH RATE (%)
			2024-Q1	2025-Q1	2024-Q1 TO 2025-Q1
34	'51	Wool, fine or coarse animal hair; horsehair yarn and woven fabric	1.8	2.0	10%
35	'32	Tanning or dyeing extracts; tannins and their derivatives; dyes, pigments and other colouring	1.5	1.8	20%
36	'12	Oil seeds and oleaginous fruits; miscellaneous grains, seeds and fruit; industrial or medicinal	1.3	1.8	33%
37	'11	Products of the milling industry; malt; starches; inulin; wheat gluten	2.0	1.7	-13%
38	'99	Commodities not elsewhere specified	1.3	1.7	28%
39	'88	Aircraft, spacecraft, and parts thereof	1.6	1.7	5%
40	'19	Preparations of cereals, flour, starch or milk; pastrycooks' products	1.5	1.6	11%
41	'31	Fertilisers	2.0	1.5	-24%
42	'89	Ships, boats and floating structures	1.2	1.5	32%
43	'17	Sugars and sugar confectionery	2.3	1.5	-35%
44	'94	Furniture; bedding, mattresses, mattress supports, cushions and similar stuffed furnishings	1.4	1.5	7%
45	'04	Dairy produce; birds' eggs; natural honey; edible products of animal origin	1.1	1.4	34%
46	'07	Edible vegetables and certain roots and tubers	1.2	1.2	4%
47	'61	Articles of apparel and clothing accessories, knitted or crocheted	0.8	0.9	16%
48	'62	Articles of apparel and clothing accessories, not knitted or crocheted	0.8	0.9	15%
49	'70	Glass and glassware	0.7	0.9	18%
50	'82	Tools, implements, cutlery, spoons and forks, of base metal; parts thereof of base metal	0.8	0.9	6%

Note: Product labels have been shortened. Values have been rounded. Growth rates are calculated on unrounded values. Source: Trade data calculated from ITC.

Trade Map. Interactive database. Downloaded from www.trademap.org in May 2025.

Table A2: Top 50 exports of goods, by quantity with explanations, 2025-Q1

RANK	CODE	PRODUCT LABEL	2024-Q1	2025-Q1	UNIT	MAJOR EXPORT DESTINATION	CHANGE IN RANK	Y-ON-Y GROWTH (%)	EXPLANATION
			EXPORTED QUANTITY	EXPORTED QUANTITY					
1	'01064900	Live insects (excluding bees)	19601384	28776440616	Units	Zambia	91	146708%	Potential data error.
2	'27011200	Bituminous coal, whether or not pulverised, non-agglomerated	15987560485	17122443096	Kilograms	India	-1	7%	Increase within normal variance.
3	'26011100	Non-agglomerated iron ores and concentrates (excluding roasted iron pyrites)	15778898906	16053395987	Kilograms	China	-1	2%	Increase within normal variance.
4	'26020000	Manganese ores and concentrates, including ferruginous manganese ores and concentrates	5670955149	6054688752	Kilograms	China	-1	7%	Increase within normal variance.
5	'26100000	Chromium ores and concentrates	5072190006	4448408765	Kilograms	China	-1	-12%	Decrease within the normal variance.
6	'48041900	Kraftliner, uncoated, in rolls of a width > 36 cm	1080734256	1149625650	Kilograms	USA	1	6%	Increase within normal variance.
7	'27011900	Coal, whether or not pulverised, non-agglomerated (excluding anthracite and bituminous coal)	1428854403	1096424250	Kilograms	India	-2	-23%	Decline in exports to India, Cambodia, UAE, Pakistan and US.
8	'72024100	Ferro-chromium, containing by weight > 4% of carbon	1008453453	752563484	Kilograms	China	0	-25%	Decline in exports to Spain, India and Türkiye.
9	'10059090	Maize (excluding seed for sowing): Other	559110773	569818080	Kilograms	Zimbabwe	0	2%	Increase within normal variance.
10	'40103900	Transmission belts or belting, of vulcanised rubber	329391	490604858	Kilograms	Madagascar	1063	148843%	Potential data error.
11	'44012200	Wood in chips or particles	353283366	484613553	Kilograms	Japan	1	37%	Increase in exports to Saudi Arabia.
12	'08061000	Fresh grapes	319069812	333398667	Kilograms	Netherlands	1	4%	Increase within normal variance.
13	'27101235	Light oils and preparations, of petroleum or bituminous minerals	360445964	293368862	Liters	Mauritius	-3	-19%	Exports to Singapore, Zambia and Norway declined substantially.
14	'25101000	Natural calcium phosphates and natural aluminium calcium phosphates	312712711	276861565	Kilograms	Netherlands	0	-11%	Decline within normal variance.
15	'27011100	Anthracite, whether or not pulverised, non-agglomerated	216728731	266516162	Kilograms	Brazil	5	23%	Exports to Brazil, Spain and Switzerland increased substantially.

RANK	CODE	PRODUCT LABEL	2024-Q1	2025-Q1	UNIT	MAJOR EXPORT DESTINATION	CHANGE IN RANK	Y-ON-Y GROWTH (%)	EXPLANATION
			EXPORTED QUANTITY	EXPORTED QUANTITY					
16	'25309000	Arsenic sulfides, alunite, pozzuolana, earth colours and other mineral substances, n.e.s.	204411564	261475101	Kilograms	China	5	28%	Exports to China, Lesotho and Namibia increased substantially.
17	'25232900	Portland cement (excluding white, whether or not artificially coloured)	241045206	216010136	Kilograms	Botswana	0	-10%	Decline within normal variance.
18	'72011000	Non-alloy pig iron in pigs, blocks or other primary forms	234362680	179222943	Kilograms	Italy	0	-24%	Exports to Italy, Netherlands and Spain declined substantially.
19	'27101202	Light oils and preparations, of petroleum or bituminous minerals	262140983	176554097	Liters	Botswana	-3	-33%	Decline in exports to Botswana and Zimbabwe.
20	'27101230	Light oils and preparations, of petroleum or bituminous minerals	230775101	171336424	Liters	Botswana	-1	-26%	Decline in exports to Botswana.
21	'26080000	Zinc ores and concentrates	81078404	143483490	Kilograms	China	14	77%	Exports to China and Indonesia increased.
22	'47020000	Chemical wood pulp, dissolving grades	354010175	140769765	Kilograms	India	-11	-60%	Exports to UK, Thailand and Belgium declined significantly.
23	'76011000	Aluminium, not alloyed, unwrought	133559239	138515134	Kilograms	US	1	4%	Increase within normal variance.
24	'25132000	Emery; natural corundum, natural garnet and other natural abrasives, whether or not heat-treated	51093597	130523115	Kilograms	US	23	155%	Significant growth. Product selected for analysis.
25	'28092090	Phosphoric acid; polyphosphoric acids, whether or not chemically defined: other	69181399	124645240	Kilograms	India	14	80%	Exports to Botswana and Zambia increased significantly.
26	'26180000	Granulated slag (slag sand) from the manufacture of iron or steel	121238909	123353834	Kilograms	USA	0	2%	Increase within normal variance.
27	'26151000	Zirconium ores and concentrates	139655960	122267767	Kilograms	China	-4	-12%	Exports to Türkiye and France declined significantly.
28	'08081000	Fresh apples	132319698	120040910	Kilograms	Bangladesh	-3	-9%	Decline within normal variance.
29	'08083000	Fresh pears	115256752	111668811	Kilograms	Netherlands	-1	-3%	Decline within normal variance.

RANK	CODE	PRODUCT LABEL	2024-Q1	2025-Q1	UNIT	MAJOR EXPORT DESTINATION	CHANGE IN RANK	Y-ON-Y GROWTH (%)	EXPLANATION
			EXPORTED QUANTITY	EXPORTED QUANTITY					
30	'10019900	Wheat and meslin (excluding seed for sowing, and durum wheat)	89942248	106696933	Kilograms	Zimbabwe	3	19%	Increase in exports to Zimbabwe, Zambia and Namibia.
31	'27101207	Light oils and preparations, of petroleum or bituminous minerals	81849248	105996125	Liters	Botswana	3	30%	Increase in exports to ship stores and bunkers.
32	'10059010	Maize (excluding seed for sowing): Dried kernels or grains fit for human consumption	102600156	98836796	Kilograms	Mozambique	-3	-4%	Decline within normal variance.
33	'29012900	Hydrocarbons, acyclic, unsaturated	74095605	95180432	Kilograms	Singapore	3	28%	Substantial increase in exports to US.
34	'26140000	Titanium ores and concentrates	291640010	93107967	Kilograms	Belgium	-19	-68%	Significant decline in exports. Product selected for analysis.
35	'71039900	Precious and semi-precious stones, worked, whether or not graded, but not strung, mounted	161665726	90335105	Carats	Germany	-13	-44%	Exports to the US declined significantly.
36	'72142000	Bars and rods, of iron or non-alloy steel, with indentations, ribs, grooves or other deformations	54929463	87191611	Kilograms	Botswana	8	59%	Exports to Botswana and Namibia increased substantially.
37	'25030000	Sulphur of all kinds (excluding sublimed sulphur, precipitated sulphur and colloidal sulphur)	33101420	83399884	Kilograms	DRC	32	152%	Exports to DRC and Zambia increased substantially.
38	'25292200	Fluorspar containing by weight > 97% calcium fluoride	54667234	81534933	Kilograms	Italy	7	49%	Exports were recorded in Italy, Mexico and the US for Quarter 1 2025, but no exports for the same period in 2024.
39	'84833090	Bearing housings for machinery, not incorporating ball or roller bearings; plain shaft bearings	132173	80580425	Units	Zimbabwe	1549	60866%	Potential data error.
40	'84828000	Roller bearings, including combined ball-roller bearings	648398	80560254	Units	Zimbabwe	738	12325%	Potential data error.
41	'84836000	Clutches and shaft couplings, incl. universal joints, for machinery	32288	80494077	Units	Zimbabwe	2584	249200%	Potential data error.
42	'27012000	Briquettes, ovoids and similar solid fuels manufactured from coal	102540551	76719811	Kilograms	Mozambique	-12	-25%	Exports to Sweden significantly declined. No exports to some countries

RANK	CODE	PRODUCT LABEL	2024-Q1	2025-Q1	UNIT	MAJOR EXPORT DESTINATION	CHANGE IN RANK	Y-ON-Y GROWTH (%)	EXPLANATION
			EXPORTED QUANTITY	EXPORTED QUANTITY					
									like Viet Nam in Quarter 1 2025.
43	'72071900	Semi-finished products of iron or non-alloy steel containing	62520151	73425521	Kilograms	Tanzania	-1	17%	Increase in exports to Kenya.
44	'08094000	Fresh plums and sloes	55676067	70350353	Kilograms	Netherlands	-1	26%	Exports to Netherlands and USA increased.
45	'44071100	Pine "pinus spp." sawn or chipped lengthwise, sliced or peeled, whether or not planed	1225416	69464275	Cubic meters	Lesotho	512	5569%	Potential data error.
46	'11031390	Groats and meal of maize "corn": Other	118966807	65436092	Kilograms	DRC	-19	-45%	Significant decrease in exports. Product selected for analysis.
47	'26011200	Agglomerated iron ores and concentrates (excluding roasted iron pyrites)	1977435	61779260	Kilograms	China	372	3024%	Potential data error.
48	'23040000	Oilcake and other solid residues, whether or not ground or in the form of pellets	29368989	57855584	Kilograms	Zimbabwe	24	97%	Increase in exports to Zimbabwe.
49	'39021090	Polypropylene, in primary forms: Other	70371889	56725090	Kilograms	Nigeria	-11	-19%	Decline in exports to Kenya and Türkiye.
50	'11031310	Groats and meal of maize "corn": maize meal not further processed	67695684	54114287	Kilograms	Mozambique	-10	-20%	Decline in exports to Malawi and Lesotho.

Note: Product labels have been shortened. Growth rates have been rounded Source: Trade data calculated from ITC. Trade Map. Interactive database.

Downloaded from www.trademap.org in May 2025.

REFERENCES

Department of Trade, Industry and Competition (2020). *ITAC Completes Investigation Into the Supply of Scrap to the Metals Industry*. Available at: <https://www.thedtic.gov.za/itac-completes-investigation-into-the-supply-of-scrap-to-the-metals-industry/> (Accessed 11 June 2025).

Department of Trade, Industry and Competition (2023). *A further 6 Month Prohibition of Exports of waste and Scrap Metal HS 7204 & 7404*. Available at: <https://www.thedtic.gov.za/a-further-6-month-prohibition-of-exports-of-waste-and-scrap-metal-hs-7204-7404/> (Accessed 11 June 2025).

ITC (n.d.). 'Trade Map'. Available at: <https://www.trademap.org/>.

Mokoena, I. and Pheto, L. (2021). *TIPS Export Tracker: Fourth Quarter 2021*. Trade & Industrial Policy Strategies. Available at: https://www.tips.org.za/manufacturing-data/tips-export-tracker/item/download/2245_0838f4bd89d673d8bebadb6b1dfaa10b (Accessed 11 June 2025).

Nyakabawo, W. and Mokoena, I. (2021) *TIPS Export Tracker: Third Quarter 2021*. Online: Trade & Industrial Policy Strategies. Available at: https://www.tips.org.za/manufacturing-data/tips-export-tracker/item/download/2235_1dff4304ed1872a040e589744ad3ffd7 (Accessed 6 June 2021).

Statistics South Africa (2025). 'GDP P0441 – GDP Time series Q1 2025'. Available at: https://www.statssa.gov.za/?page_id=1854&PPN=P0441&SCH=74256 (Accessed: 3 June 2025).

Trade & Industrial Policies Strategies (TIPS) is an independent, non-profit, economic research institution established in 1996 to support economic policy development. TIPS undertakes quantitative and qualitative research, project management, dialogue facilitation, capacity building and knowledge sharing. Its two areas of focus are trade and inclusive industrial policy; and sustainable growth.

info@tips.org.za | +27 12 433 9340 | www.tips.org.za